



27 Manderley Gardens, Sutton-In-Ashfield, NG17 1LQ
£169,950

ENTRANCE HALL

Stairs to first floor, door to living room

CLOAKROOM WC

Low level wc, wash hand basin

LIVING ROOM 15'1" x 9'10" (4.6 x 3.0)

Double glazed window to front aspect, laminate flooring

KITCHEN DINING ROOM 13'5" x 7'10" (4.1 x 2.4)

Fitted kitchen with built in oven and hob, range of wall and base units, French doors leading to the outside rear. Dining area with downstairs WC.

FIRST FLOOR LANDING

Loft access, carpet flooring

BEDROOM 13'1" x 9'10" (4.0 x 3.0)

Double glazed window, carpet flooring

BEDROOM 12'9" x 7'6" (3.9 x 2.3)

Double glazed window, carpet flooring

BATHROOM

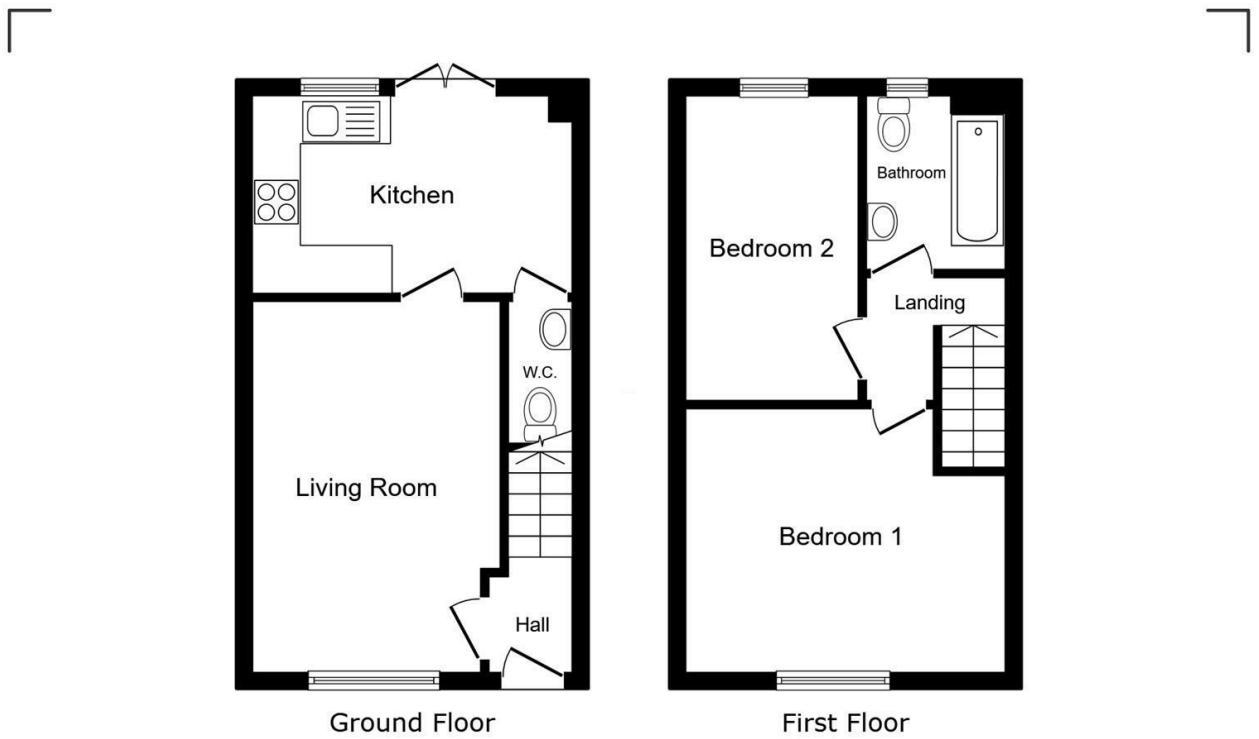
Matching white bathroom suite with tiled surrounds

REAR GARDENS

Laid to lawn, patio seating area, fully enclosed

PARKING

Adjacent to the property



This floor plan is for illustrative purposes only. It is not drawn to scale. Any measurements, floor areas (including any total floor area), openings and orientations are approximate. No details are guaranteed, they cannot be relied upon for any purpose and do not form any part of any agreement. No liability is taken for any error, omission or misstatement. A party must rely upon its own inspection(s). Powered by www.PropertyBox.io